



**C R O N I N**

**EXPLORATION**

**GRANITE LAKE**

**MAY 2026**

# Disclaimer

The information contained herein has been prepared to assist interested parties in making their own evaluation of Cronin Exploration Inc. ("Allied" or the "Company") and does not purport to contain all of the information that a prospective investor or partner may desire. In all cases, interested parties should conduct their own investigation and analysis of Cronin. Neither the Company nor any of its affiliates make any representation or warranty as to the accuracy or completeness of the information presented. This includes, without limitation, any estimates or projections, and neither the Company nor its affiliates shall have any liability for any statements (expressed or implied) contained in, or for any omissions from, this presentation or any other written or oral communications transmitted to the recipient hereof in the course of its evaluation of the Company, nor should anything contained herein be relied upon as a promise, representation or warranty regarding future events or performance of the Company. Moreover, the information contained herein speaks as of the date hereof; the Company undertakes no obligation to update any such information. The only statements that will have any legal effect will be those specifically contained or referred to, and then only to the extent provided, in definitive legal documentation.

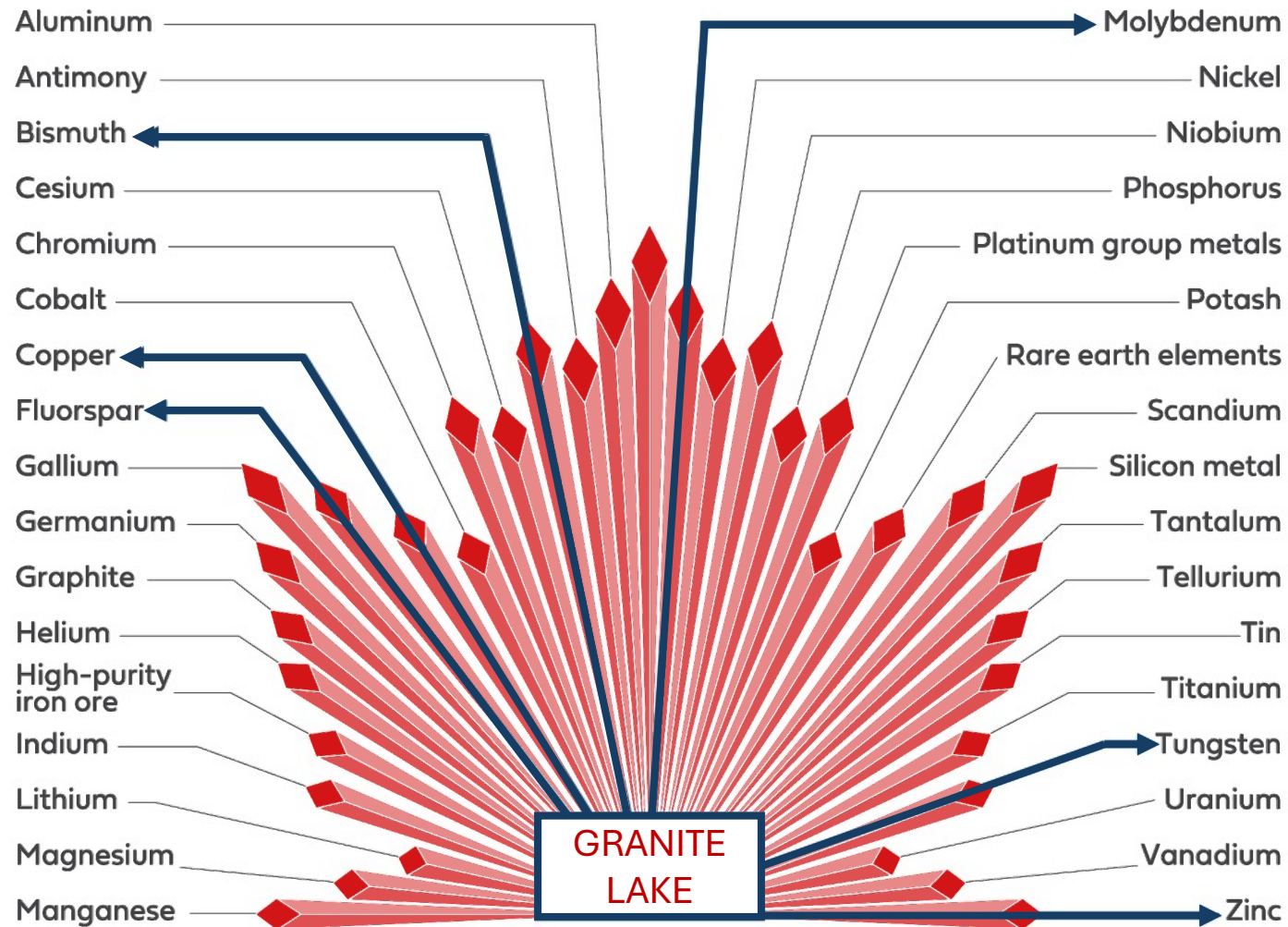
Forward Looking Statements and Cautionary Notes – This presentation contains "forward-looking information" within the meaning of the Canadian securities laws. Statements, other than statements of historical fact, may constitute forward-looking information and include, without limitation, statements about: anticipated timing and content of upcoming work programs, geological interpretations, receipt of property titles, and potential copper recovery processes; anticipated dates for receipt of permits, approvals and other milestones; anticipated results of drilling programs, feasibility studies and other analyses; anticipated availability and terms of future financing; future production, operating and capital costs; and operating or financial performance. Information concerning potential contingent copper resource estimates also may be deemed to be forward-looking information in that it reflects a prediction of the copper-bearing zones that would be encountered if a copper structure were developed and produced.

With respect to the forward-looking information contained in this presentation, the Company has made numerous assumptions regarding, among other things, the geological, metallurgical, engineering, financial and economic advice that the Company has received is reliable and are based upon practices and methodologies which are consistent with industry standards. While the Company considers these assumptions to be reasonable, these assumptions are inherently subject to significant uncertainties and contingencies.

Additionally, there are known and unknown risk factors which could cause the Company's actual results, performance or achievements to be materially different from any future results, performance or achievements expressed or implied by the forward-looking information contained herein. Known risk factors include, among others: fluctuations in commodity prices and currency exchange rates; uncertainties relating to interpretation of well results and the geology, continuity and grade of copper deposits; uncertainty of estimates of capital and operating costs, recovery rates, production estimates and estimated economic return; the need for cooperation of government agencies in the exploration and development of properties and the issuance of required permits; the need to obtain additional financing to develop properties and uncertainty as to the availability and terms of future financing; the possibility of delay in exploration or development programs or in construction projects and uncertainty of meeting anticipated program milestones; uncertainty as to timely availability of permits and other governmental approvals; increased costs and restrictions on operations due to compliance with environmental and other requirements; increased costs affecting the metals industry and increased competition in the metals industry for properties, qualified personnel, and management.

All forward-looking information herein is qualified in its entirety by this cautionary statement, and the Company disclaims any obligation to revise or update any such forward-looking information or to publicly announce the results of any revisions to any of the forward-looking information contained herein to reflect future results, events or developments, except as required by law.

Qualified Person – Technical information contained in this presentation has been reviewed and approved by Ian Dickie, P.Geo., a "Qualified Person" as defined by National Instrument 43-101 – Standards of Disclosure for Mineral Projects.



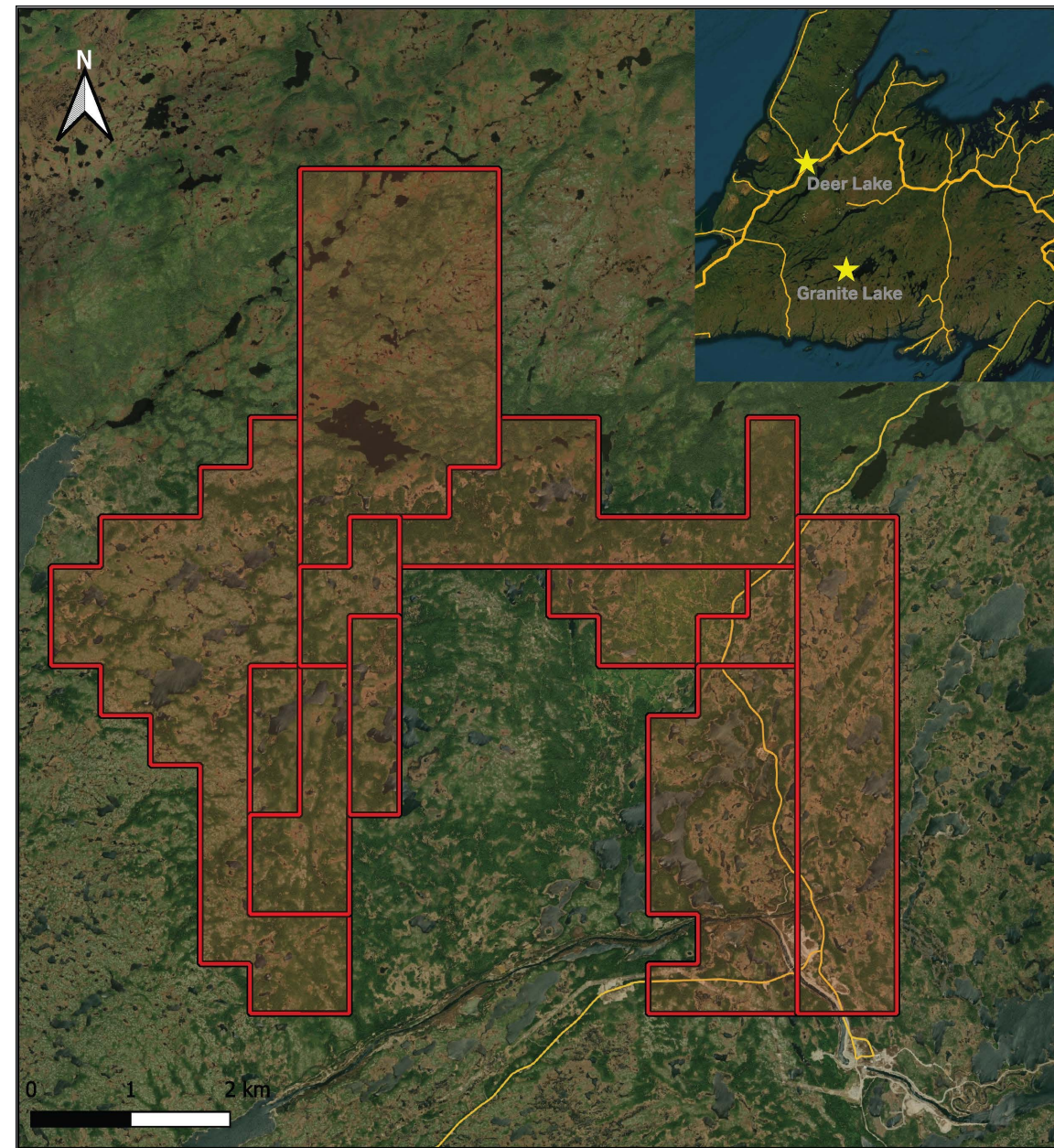
# CANADA'S CRITICAL MINERALS LIST

# Overview

- Polymetallic Vein hosted mineralization
  - W/Bi/Zn/Mo/Mn/Pb/Cu/Ag
- Location: Central Newfoundland
- 119 Claim Blocks
  - 3,478 Ha
- Devonian Granite host environment
- Associated with mineralization (Gaspé Bay)
- 72 Historical Drillholes (10,800m)
- Spatial correlation of Geophysical & Geochemical Anomalies

# Granite Lake Claim Block

- Location: Central Newfoundland
  - 315 km SE of Deer Lake
- Claim Size: 3,478 Ha
- Targets: Polymetallic Vein Hosted Mineralization
- Regional Analogs: Gaspé Bay (Devonian Granites)
  - East Kempville, NS
  - Mt. Pleasant, NB
- History: Soil & Lake Sediments sampling
  - 72 Historical Drillholes (10,800m)
    - On/Adjacent to Granite Lake Claim
- Adjacent to Granite Canal hydro generation station
  - Road Access and ATV trail access throughout
- Access to Electricity



# Historic Work

Period	Exploration Activity
1981-1983	Soil anomalies identified by soil sampling program (Teck) Small scale mapping & trenching programs 5 Historical Drillholes
2000	6 Diamond Drillholes completed
2006	High Resolution Magnetic/EM/Radiometric survey completion (Playfair Mining)
2008	Lake Sediment survey & anomaly map completed (Playfair Mining)
2007-2011	61 Diamond Drillholes completed

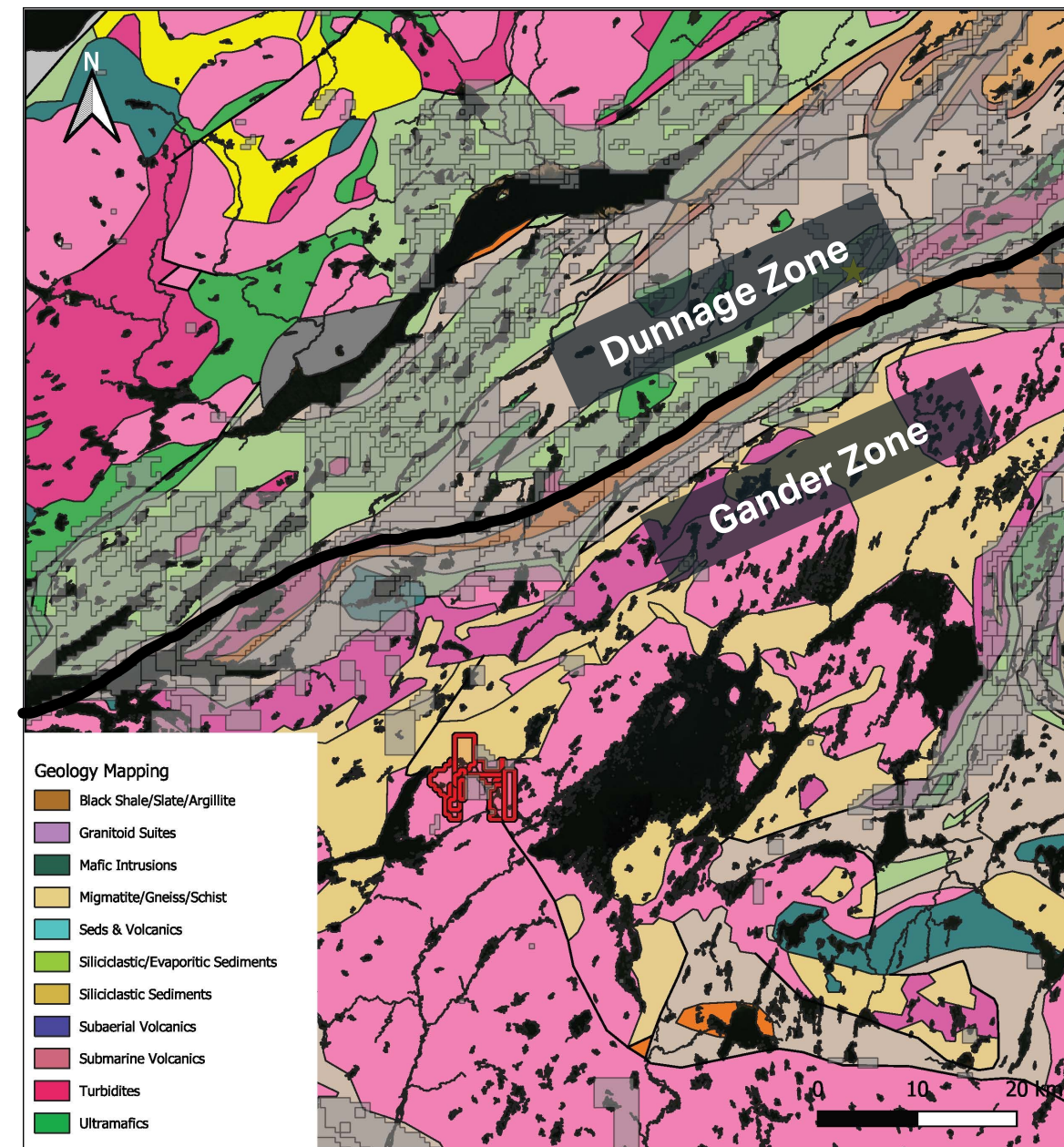
# Area Highlights

- Equinox Gold - Valentine Gold Mine
  - 2.7Moz Au Reserves - Entering Production 2026
  - 1.3 Moz Au Indicated & Inferred
- Benton Resources - Great Burnt Deposit
  - 667Kt @ 3.21% Cu Indicated
  - 482Kt @ 2.35% Cu Inferred
- Canterra Minerals - Lundberg Deposit/Buchans Mine Area
  - 16.7Mt @ 1.5% Zn, 0.4% Cu, 0.6% Pb, 5.7g/t Ag Indicated
- Benton Resources - Dominion Lake - Trinity Zone Grab Samples
  - 14.6% Zn, 2.53% Cu, 68.7g/t Silver
- Teck – Duck Pond
  - Production 2007-2014
  - 5Mt VMS Ore @ 2.7% Cu, 4.4% Zn, 53g/t Ag, 0.6 g/t Au



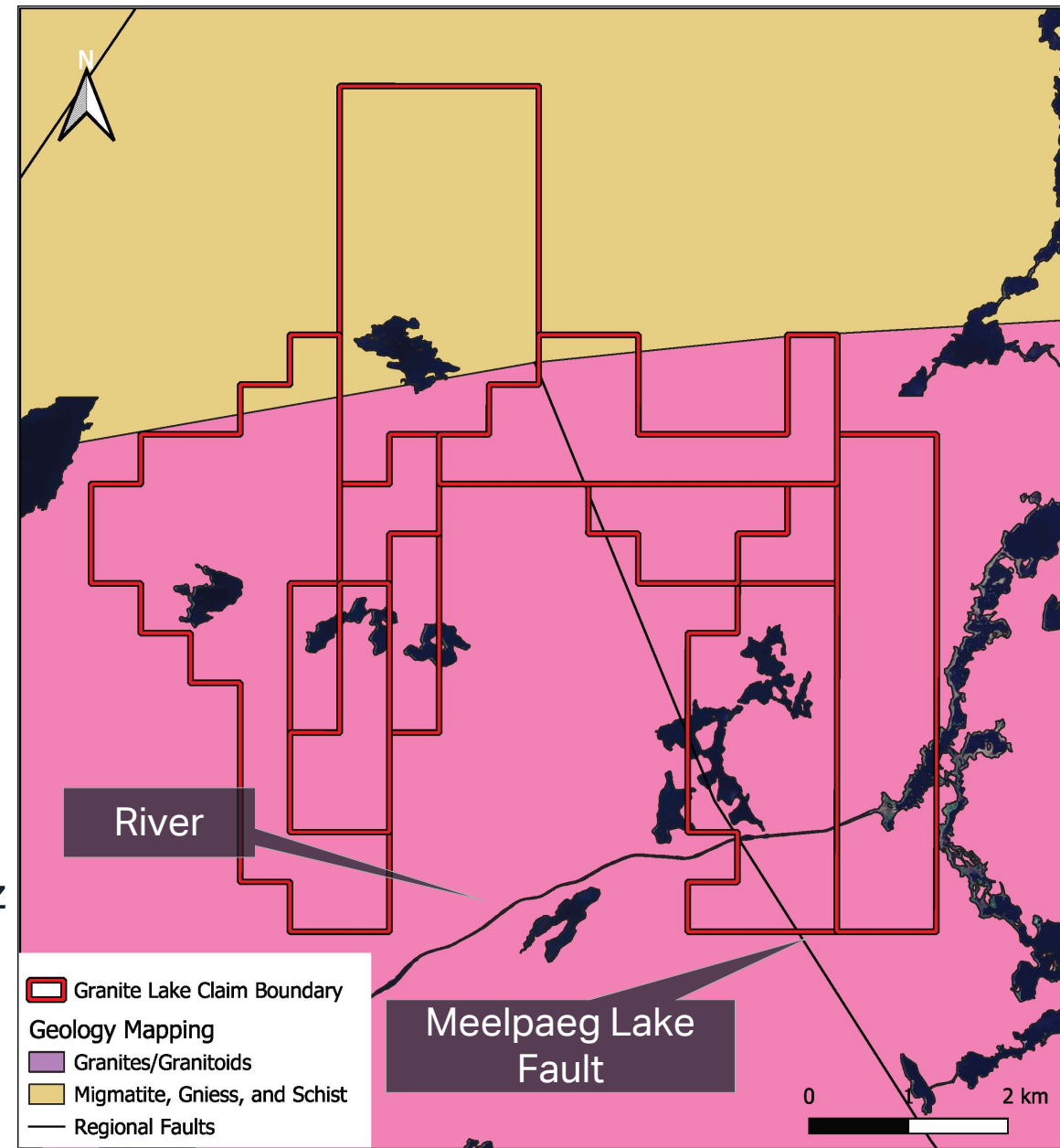
# Regional Geology

- Granite Lake sits within the Meelpaeg Subzone of central Newfoundland, near the contact between Dunnage and Gander Zones, within the Gondwanan Terrane
- Host rocks comprised of intrusional Silurian/Devonian granitoid batholiths and migmatitic schists & gneiss



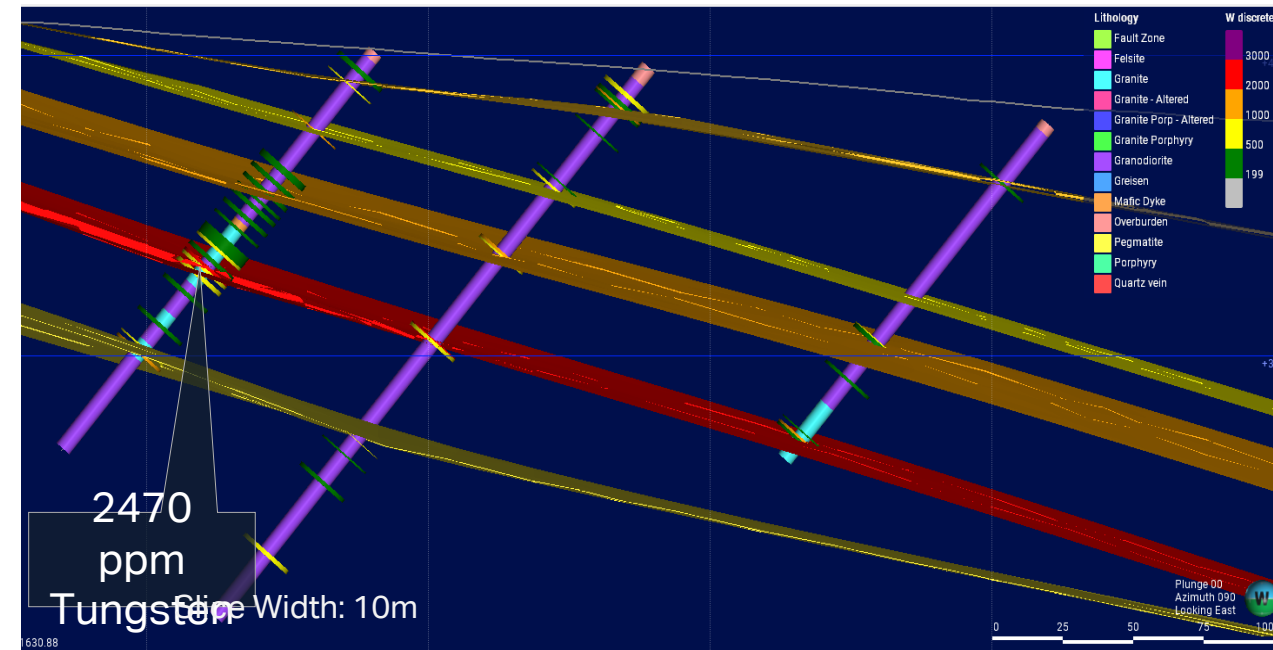
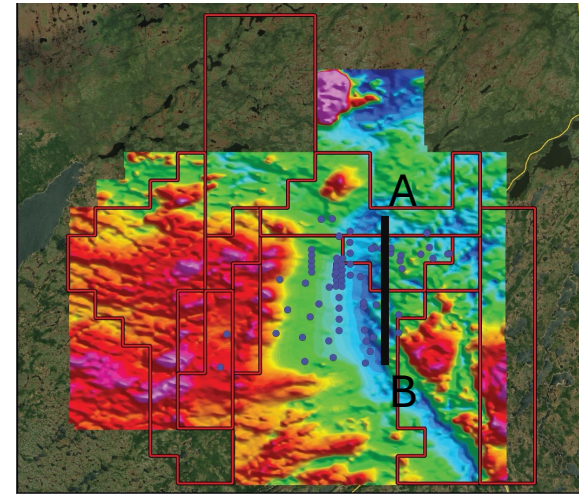
# Property Geology

- Devonian Granites (pink)
  - Granitic intrusions associated with regional mineralization events (Gaspé Bay)
  - Largely undeformed or weakly foliated
    - Localized mylonitic faulting
  - Alteration and Structurally controlled
- Migmatitic Gniess & Schists (Yellow)
  - Areas of higher deformation near major regional deformation zone
- Historical prospecting has identified base metal mineralization associated with East/West trending quartz veining within plutonic host rocks
- Structural Interpretation is one of the main goals of 2026 Field Season



# Mineralization

- Devonian Granites regionally associated with mineralization (*Gaspe Bay Deposit*)
- Contacts between Intrusional bodies create suitable mineralization setting
- East-West trending Quartz Veins
  - Tungsten mineralization observed in Wolframite & Scheelite
- Late-Stage veining demonstrating polymetallic base metal mineralization potential
- Historical high-grade values require follow-up for ground-truthing and potential over-detection limit testing



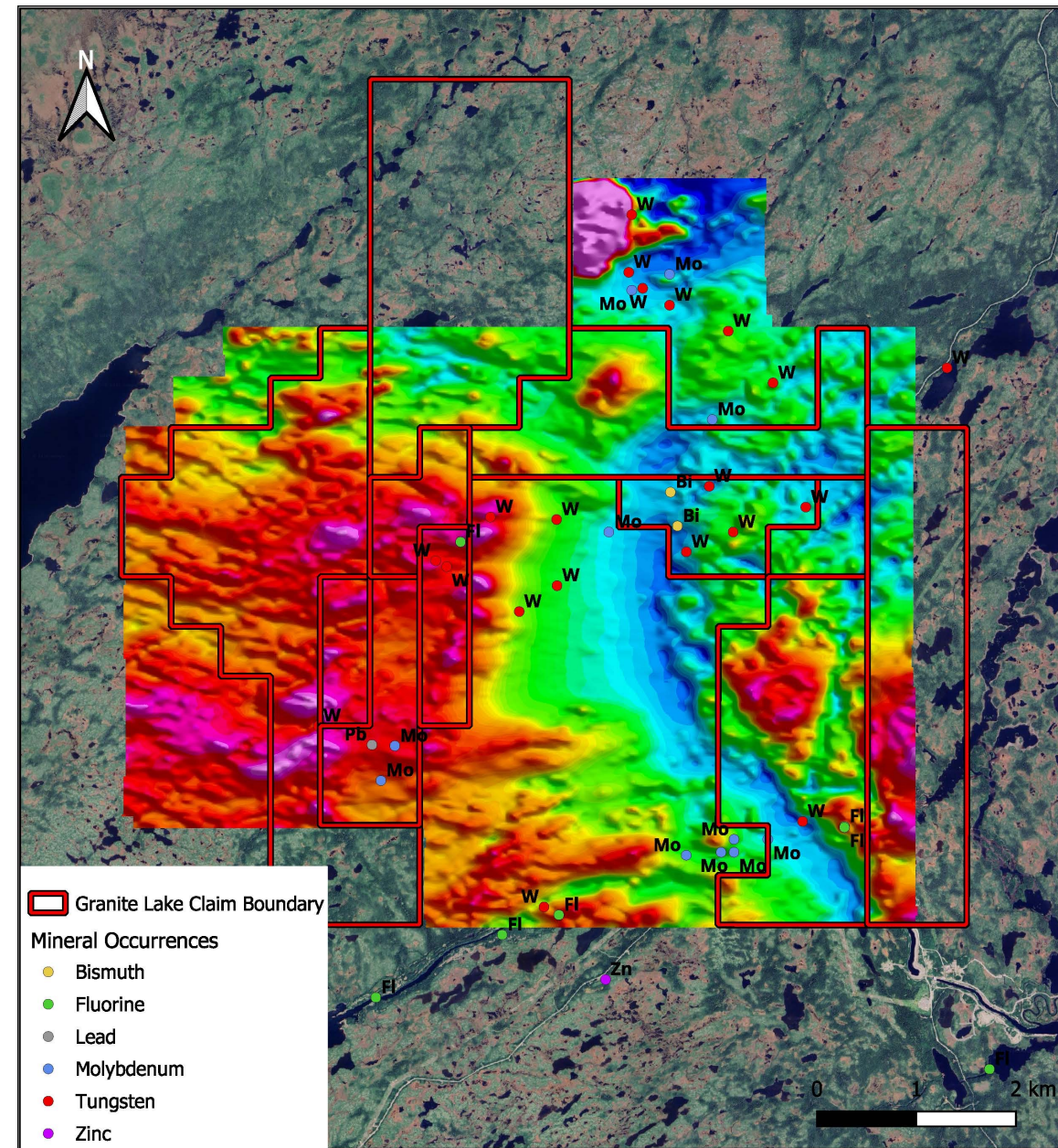
# Granite Lake – Mineral Occurrences

Historical Granite Lake Area Assays

Element	Grade (g/t)	Sample Type
Tungsten (WO <sub>3</sub> )	17,000	Core
Bismuth	19,000	Grab
Manganese	18,066	Grab
Zinc	1,469	Grab
Lead	1,200	Grab
Molybdenum	650	Grab
Silver	13.7	Grab

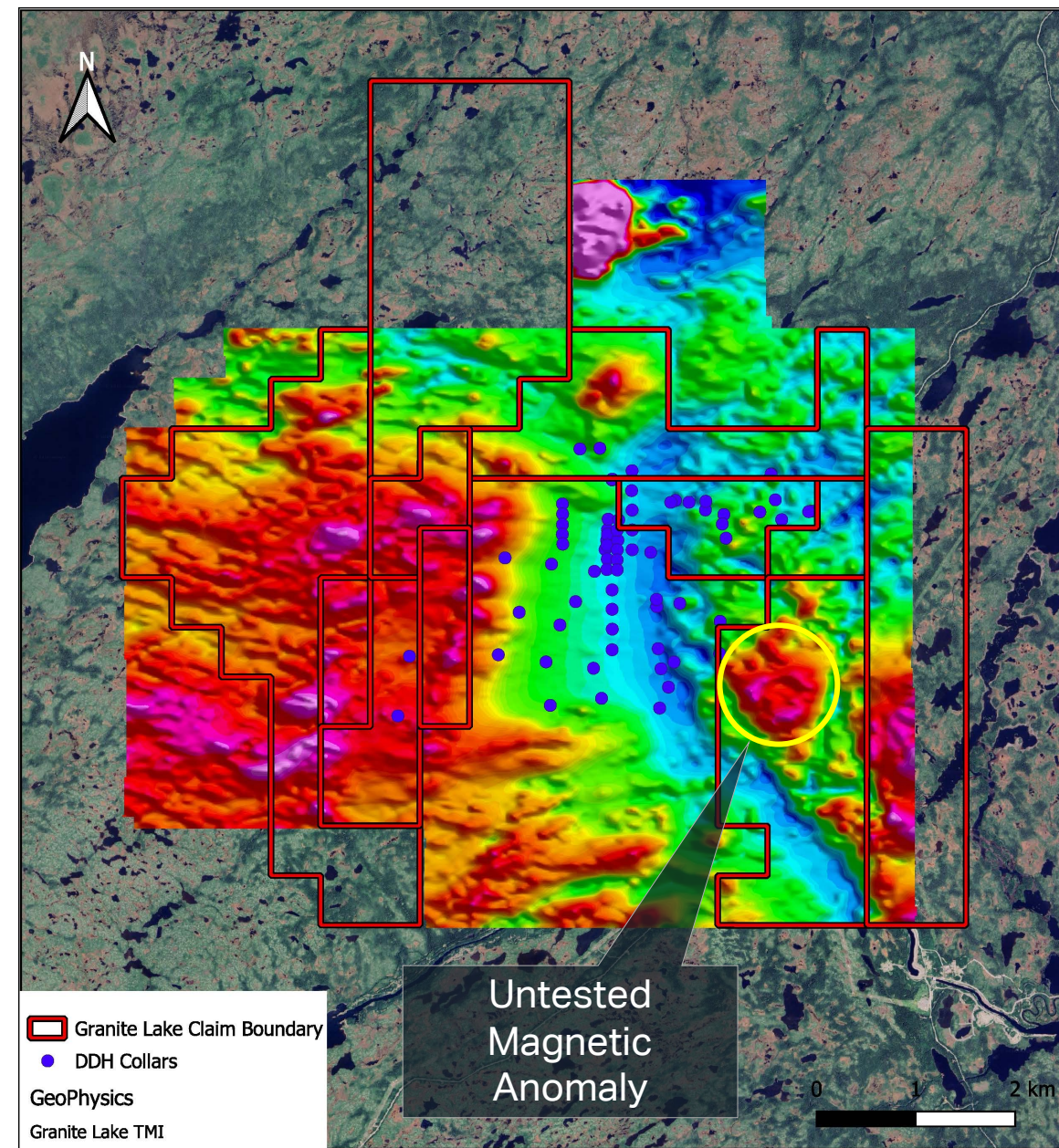
- Tungsten – Wolframite & Scheelite
- Molybdenum – Molybdenite
- Lead – Galena
- Fluorine – Fluorite
- Bismuth – Bismuthite
- All associated with Hydrothermal Veining

\*Note\*: Assays compiled from historical reports, sometimes with unverified locations.



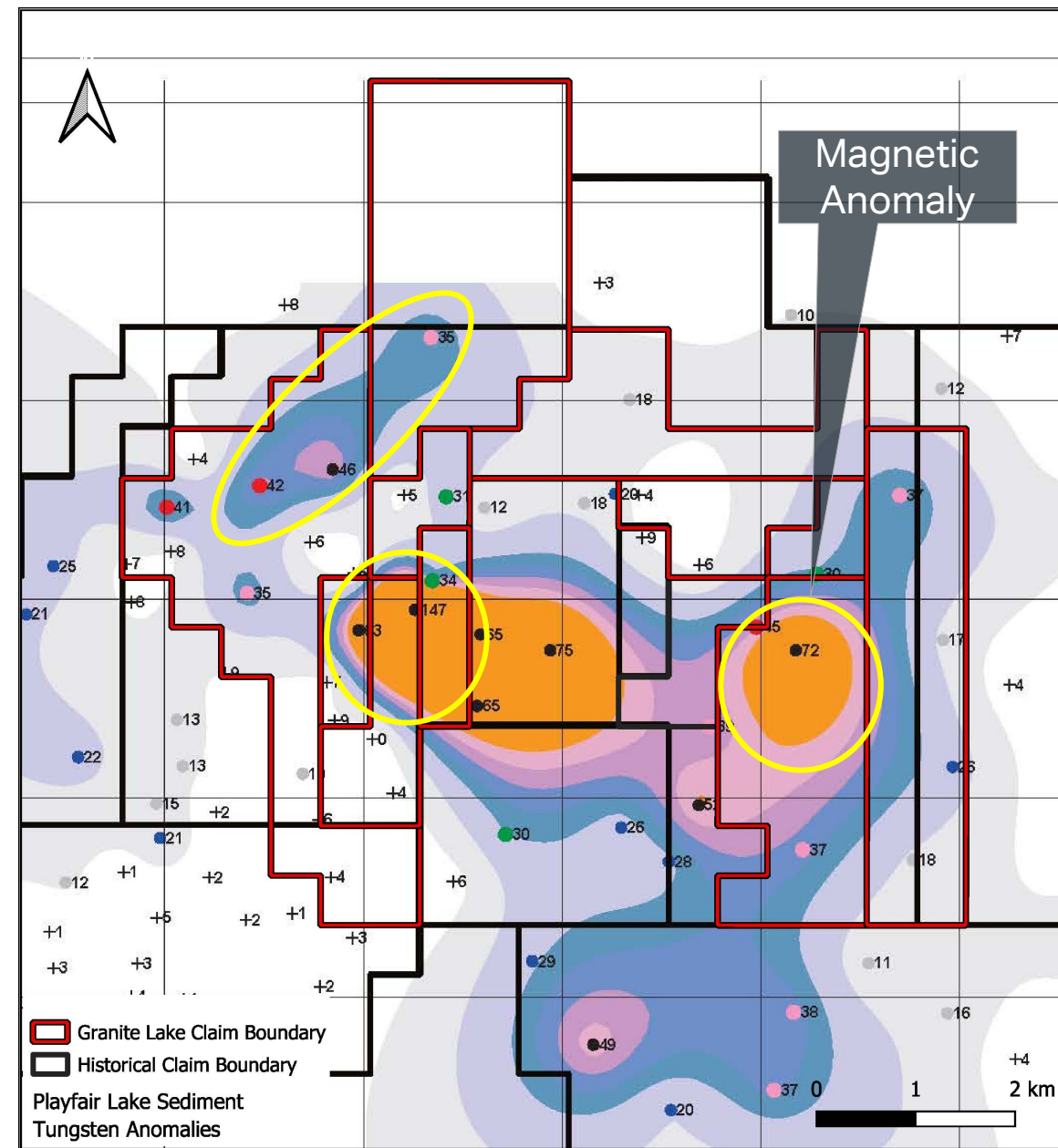
# Regional Geophysics

- Airborne Surveys completed 2006
  - Total Magnetics
    - Significant Anomaly along eastern edge
    - 700m diameter
  - Radiometrics
    - Uranium
    - Tilt Derivative
    - Resistivity
- **Magnetic anomaly remains untested.**
- **Circular Geometry suggests Heat Source for Base Metal mineralisation**



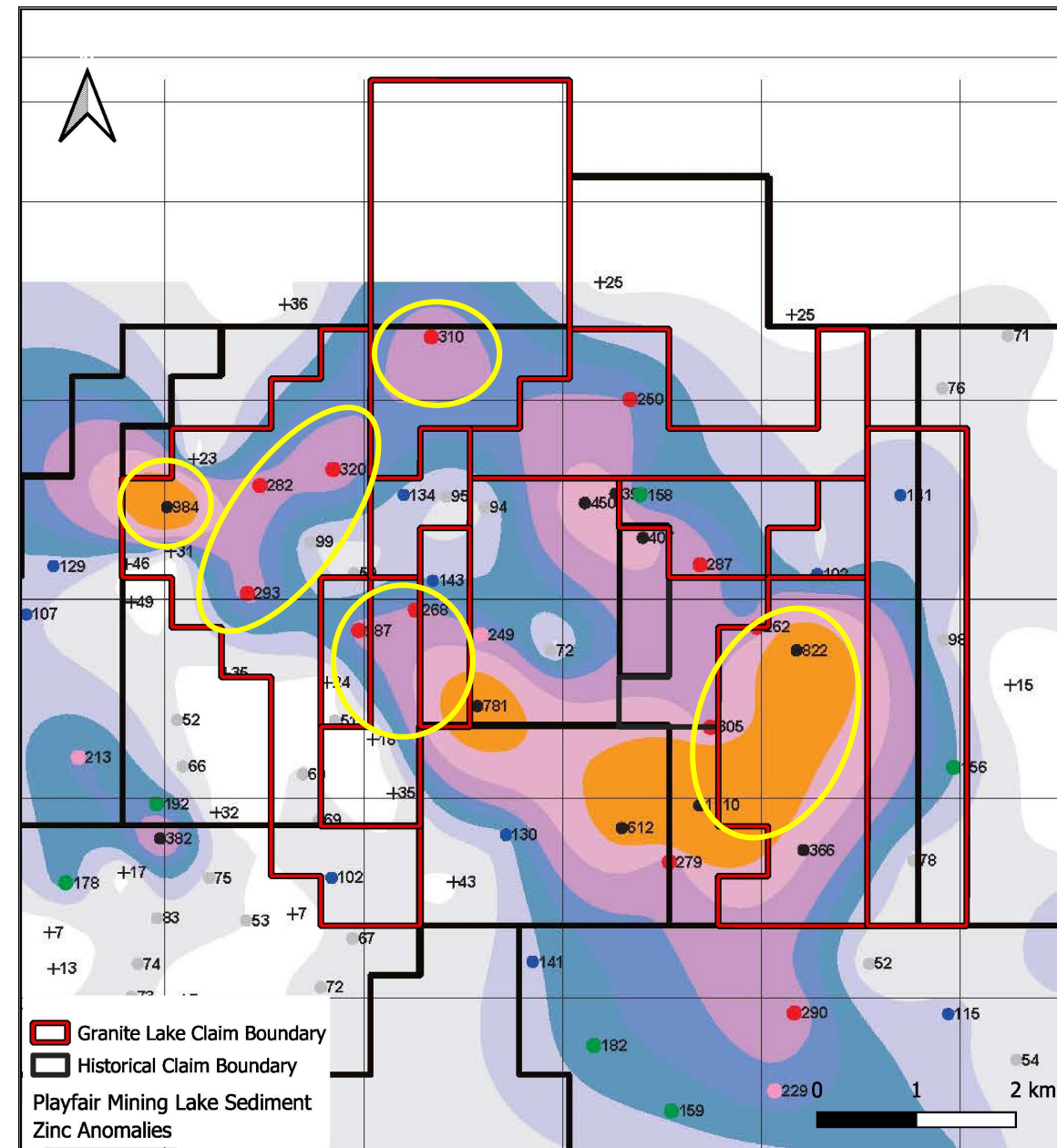
# Property GeoChem - Tungsten

- Playfair Mining 2008 Lake Sediment Study
- Note the spatial correlation between Lake Sediment and Magnetic Anomalies from previous slide
- Tungsten Anomaly shares same circular geometry suggesting Porphyritic potential



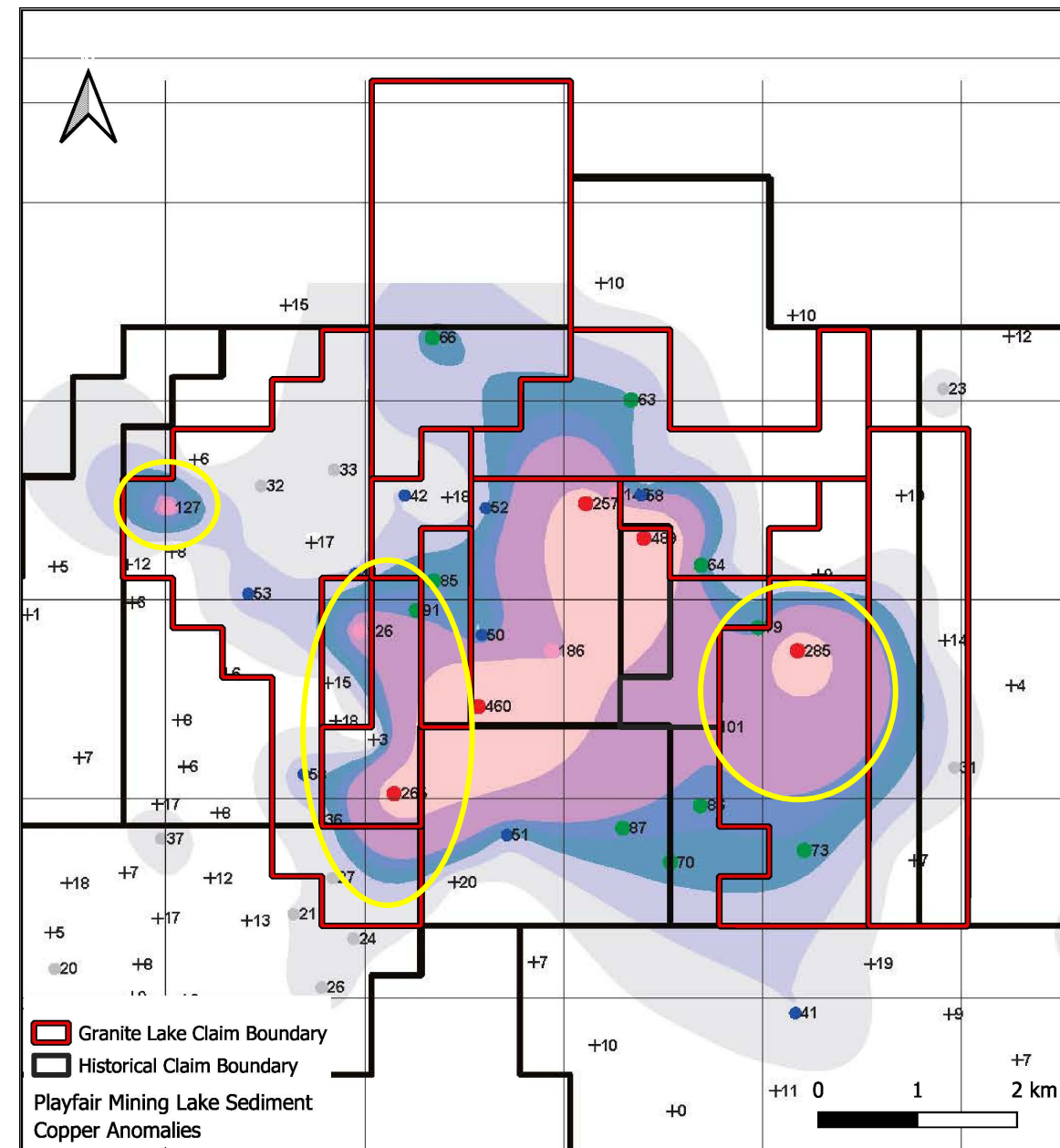
# Property GeoChem - Zinc

- Playfair Mining 2008 Lake Sediment Study
- Magnetic Highs associated with Plutonic Intrusions
  - Lake Sediment Zinc anomaly overlays Magnetic High
- Spatial Correlation of Tungsten and Zinc anomalies suggests potential polymetallic mineralization
- Minor Zinc anomaly on western edge of claim package



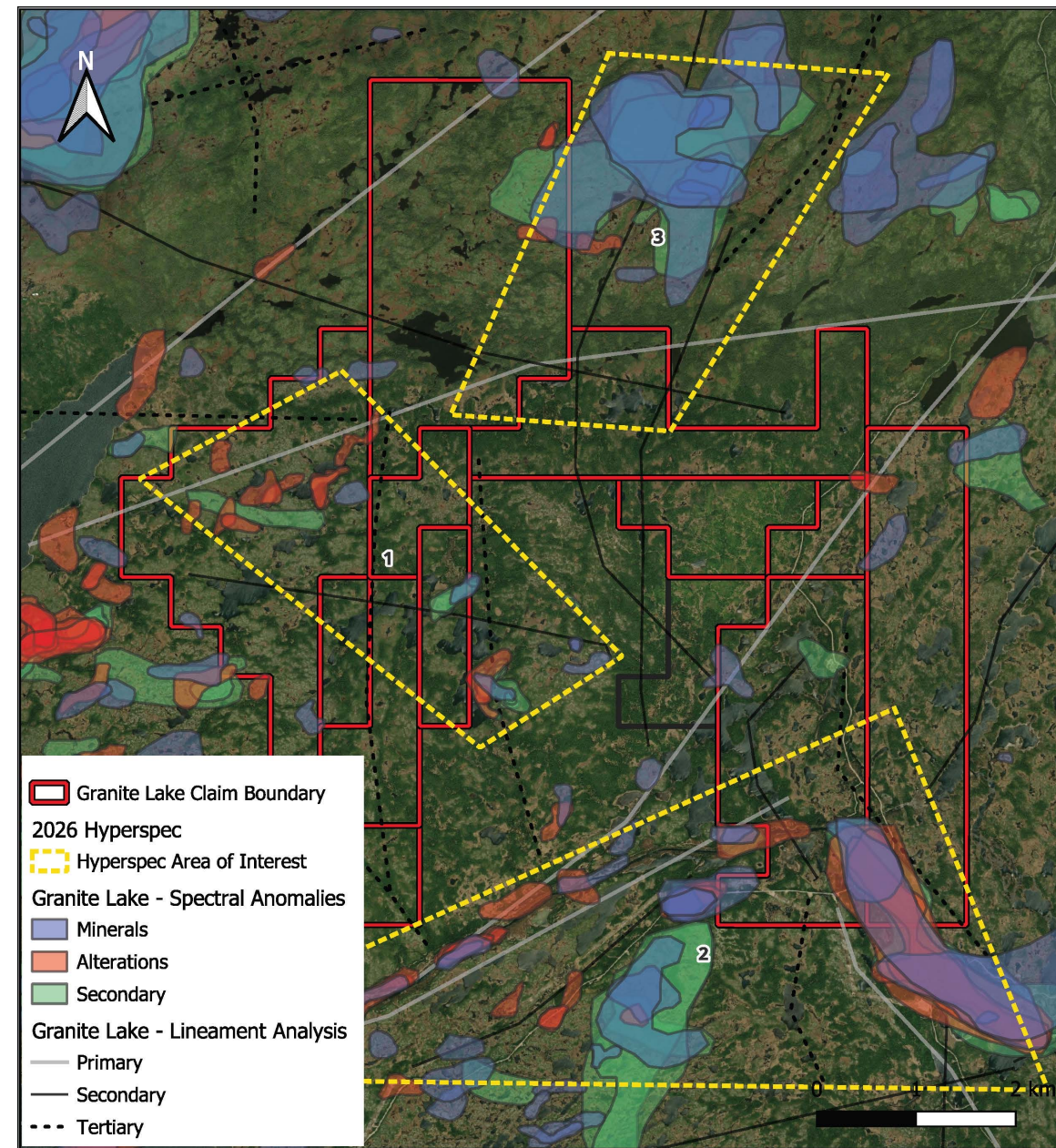
# Property GeoChem - Copper

- Playfair Mining 2008 Lake Sediment Study
- Magnetic Highs associated with Plutonic Intrusions
  - Lake Sediment Copper anomaly overlays Magnetic High
- Spatial Correlation of Copper anomaly offers further evidence of polymetallic mineralization
- Minor Copper anomaly on western edge of claim package



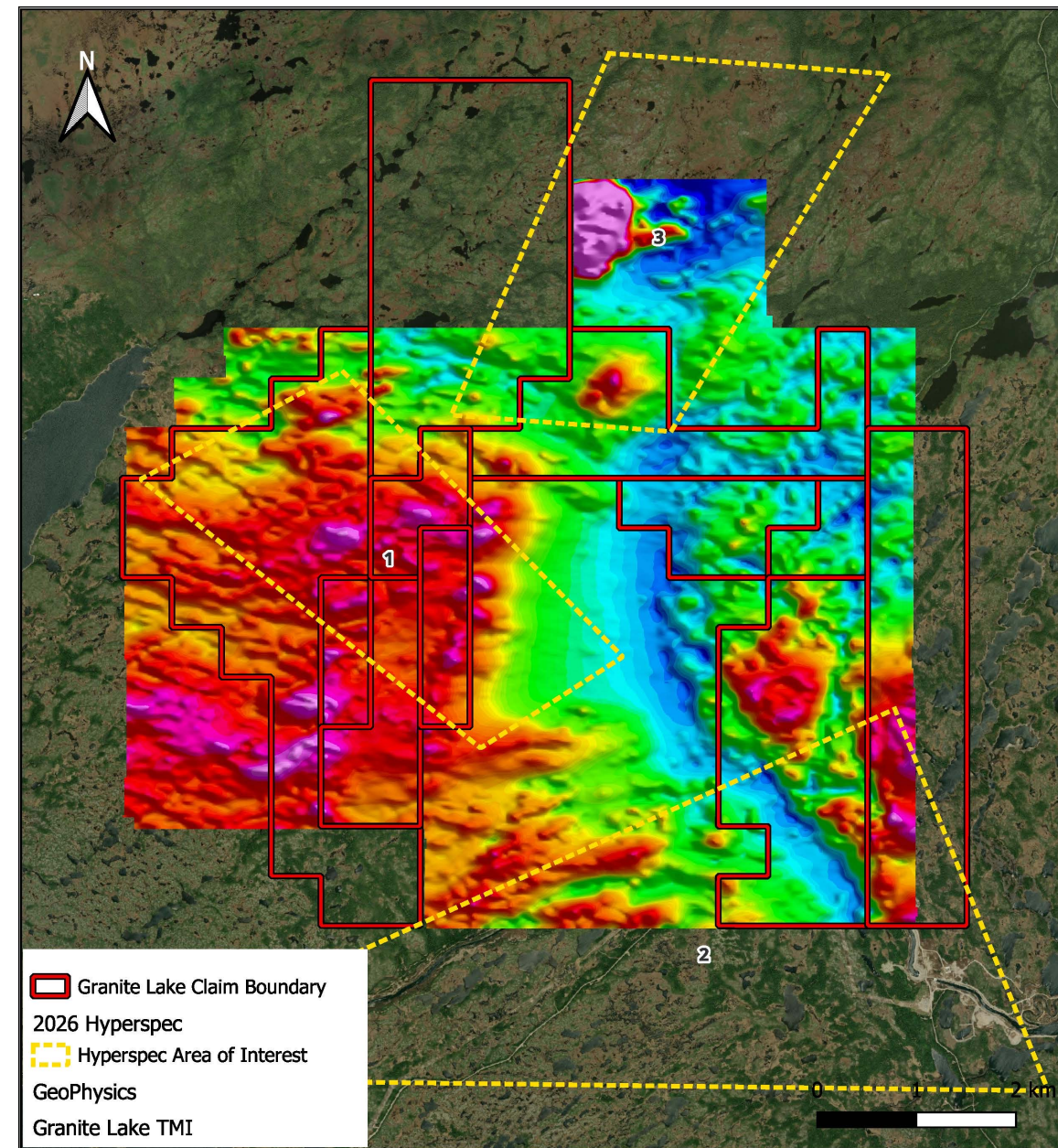
# Property Geology – Hyperspec

- 2026 Hyperspectral Analysis confirmed 3 Areas of Interest on/adjacent to the Granite Lake Claim.
- Areas 1 & 2 Spatially Corroborate Magnetic and Lake Sediment Anomaly Targets
- Based off Structural & Alteration interpretation from Satellite Reflectance Analysis



# Follow-up Targeting

- Spatial Correlation of:
  - Hyperspec Alteration & Structural Lineaments
  - Geophysical Magnetic Anomaly
  - Polymetallic Lake Sediments Anomalies
  - Historical High-Grade Polymetallic showings
- Warrants follow-up claim-wide prospecting campaign, soil sampling, and structural analysis



# Proposed Exploration Program

## Year 1 – Proposed Exploration Programme

- Hyperspectral Analysis (Complete)
  - Satellite Imaging used to identify alteration zones and structural lineaments
- Geological & Geochemical Mapping/Sampling
  - Property-wide reconnaissance geological mapping/prospecting
  - 100x100 spaces Lake/Soil Sampling over Magnetic Anomaly
  - Structural Interpretation of entire project area
- Surface IP Geophysical Survey
  - Following up on Geological Mapping
  - Used to identify conductive signatures at depth as part of drill hole targeting

# Summary & Project Highlights

- 3,478 Ha claim package
- Known Polymetallic Base Metal Mineralization on site
- Drill intercepts >2400 ppm W
- 6 Occurrences of registered Critical Minerals
- Untested Magnetic Anomaly
- Adjacent to Moly Hill Molybdenum Deposit
- Multiple Base Metal Lake Sediment Anomalies
- Defined Exploration Targets
- Spatial correlation of Hyperspec, Magnetic, and Lake Sediment anomalies

# About Cronin Exploration



**Natural Resources** focused investor and advisor

We seek opportunities to **Partner** with management teams in the **Formation** and **Development** of companies

**Principal** investors, **Proprietary** deal flow, **Global** reach

From **Seed** through **Harvest**, growing the companies of tomorrow through **Diligent Advice** and **Patient Capital**



**C R O N I N**

**E X P L O R A T I O N**



Unit 309-2912 West Broadway Street,  
Vancouver, BC V6K 0E9 Canada



+1 (250) 877-1394 – Kyler Hardy  
+1 (647) 332-3922 – Ian Dickie



[khardy@cronincapital.ca](mailto:khardy@cronincapital.ca)  
[idickie@cronincapital.ca](mailto:idickie@cronincapital.ca)