



CRONIN

EXPLORATION

Porphyry Creek

December 2025

Disclaimer

The information contained herein has been prepared to assist interested parties in making their own evaluation of Cronin Exploration Inc. (“Allied” or the “Company”) and does not purport to contain all of the information that a prospective investor or partner may desire. In all cases, interested parties should conduct their own investigation and analysis of Cronin. Neither the Company nor any of its affiliates make any representation or warranty as to the accuracy or completeness of the information presented. This includes, without limitation, any estimates or projections, and neither the Company nor its affiliates shall have any liability for any statements (expressed or implied) contained in, or for any omissions from, this presentation or any other written or oral communications transmitted to the recipient hereof in the course of its evaluation of the Company, nor should anything contained herein be relied upon as a promise, representation or warranty regarding future events or performance of the Company. Moreover, the information contained herein speaks as of the date hereof; the Company undertakes no obligation to update any such information. The only statements that will have any legal effect will be those specifically contained or referred to, and then only to the extent provided, in definitive legal documentation.

Forward Looking Statements and Cautionary Notes – This presentation contains “forward-looking information” within the meaning of the Canadian securities laws. Statements, other than statements of historical fact, may constitute forward-looking information and include, without limitation, statements about: anticipated timing and content of upcoming work programs, geological interpretations, receipt of property titles, and potential copper recovery processes; anticipated dates for receipt of permits, approvals and other milestones; anticipated results of drilling programs, feasibility studies and other analyses; anticipated availability and terms of future financing; future production, operating and capital costs; and operating or financial performance. Information concerning potential contingent copper resource estimates also may be deemed to be forward-looking information in that it reflects a prediction of the copper-bearing zones that would be encountered if a copper structure were developed and produced.

With respect to the forward-looking information contained in this presentation, the Company has made numerous assumptions regarding, among other things, the geological, metallurgical, engineering, financial and economic advice that the Company has received is reliable and are based upon practices and methodologies which are consistent with industry standards. While the Company considers these assumptions to be reasonable, these assumptions are inherently subject to significant uncertainties and contingencies.

Additionally, there are known and unknown risk factors which could cause the Company’s actual results, performance or achievements to be materially different from any future results, performance or achievements expressed or implied by the forward-looking information contained herein. Known risk factors include, among others: fluctuations in commodity prices and currency exchange rates; uncertainties relating to interpretation of well results and the geology, continuity and grade of copper deposits; uncertainty of estimates of capital and operating costs, recovery rates, production estimates and estimated economic return; the need for cooperation of government agencies in the exploration and development of properties and the issuance of required permits; the need to obtain additional financing to develop properties and uncertainty as to the availability and terms of future financing; the possibility of delay in exploration or development programs or in construction projects and uncertainty of meeting anticipated program milestones; uncertainty as to timely availability of permits and other governmental approvals; increased costs and restrictions on operations due to compliance with environmental and other requirements; increased costs affecting the metals industry and increased competition in the metals industry for properties, qualified personnel, and management.

All forward-looking information herein is qualified in its entirety by this cautionary statement, and the Company disclaims any obligation to revise or update any such forward-looking information or to publicly announce the results of any revisions to any of the forward-looking information contained herein to reflect future results, events or developments, except as required by law.

Qualified Person – Technical information contained in this presentation has been reviewed and approved by Ian Dickie, P.Geo., a “Qualified Person” as defined by National Instrument 43-101 – Standards of Disclosure for Mineral Projects.

Overview

- Copper Porphyry
- Central British Columbia
- 3,422Ha contiguous claim
- 2 km south of Hazelton
- Historical Production
- Previous Geochem/Geophysical Surveys
+ Drilling
- Available Targets

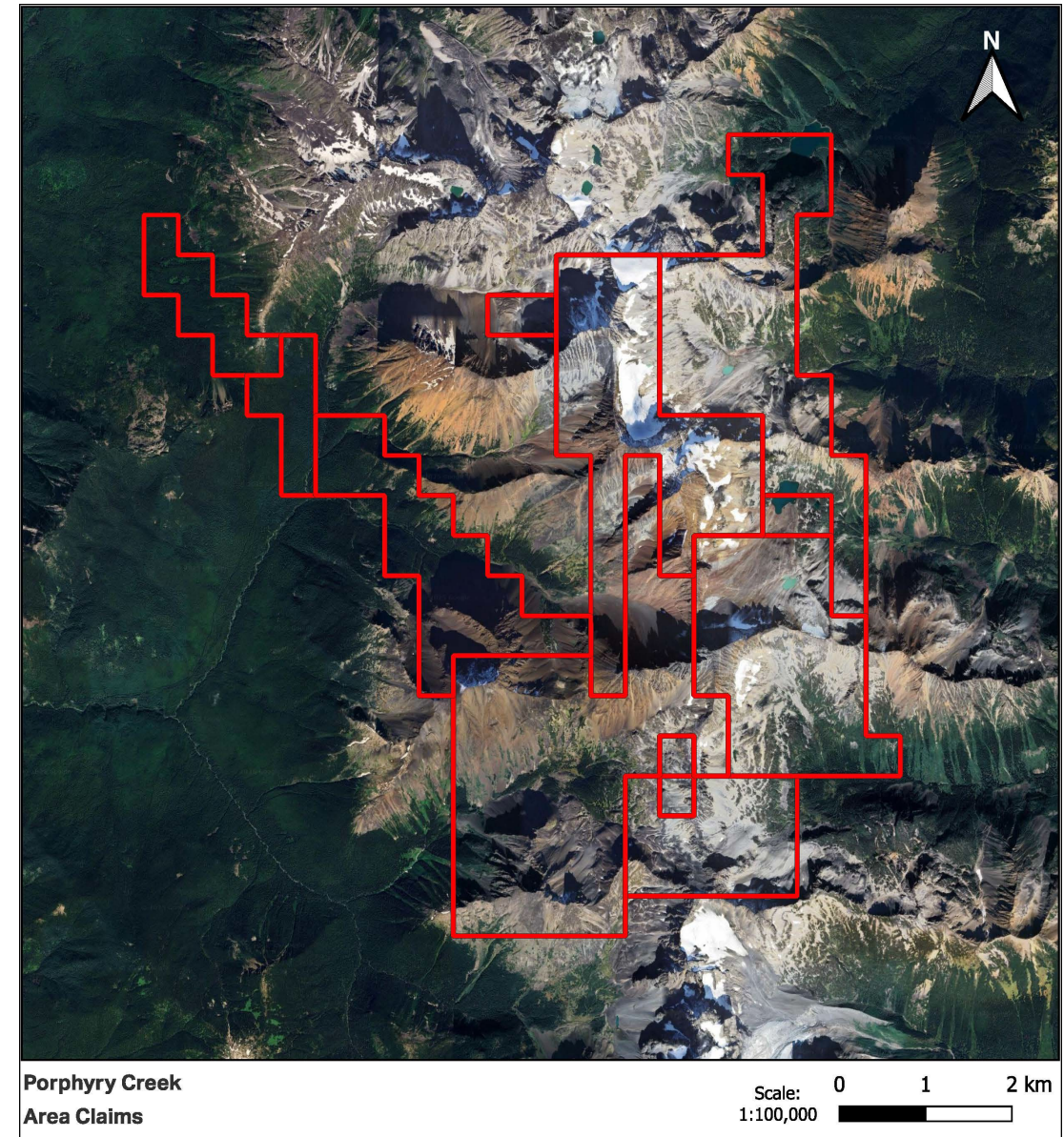
Location & Regional Overview

- North-Central Interior British Columbia
- Adjacent to established community of Hazelton, BC
 - Road Access
- Claim Package helicopter access
 - Drill roads in southern extent



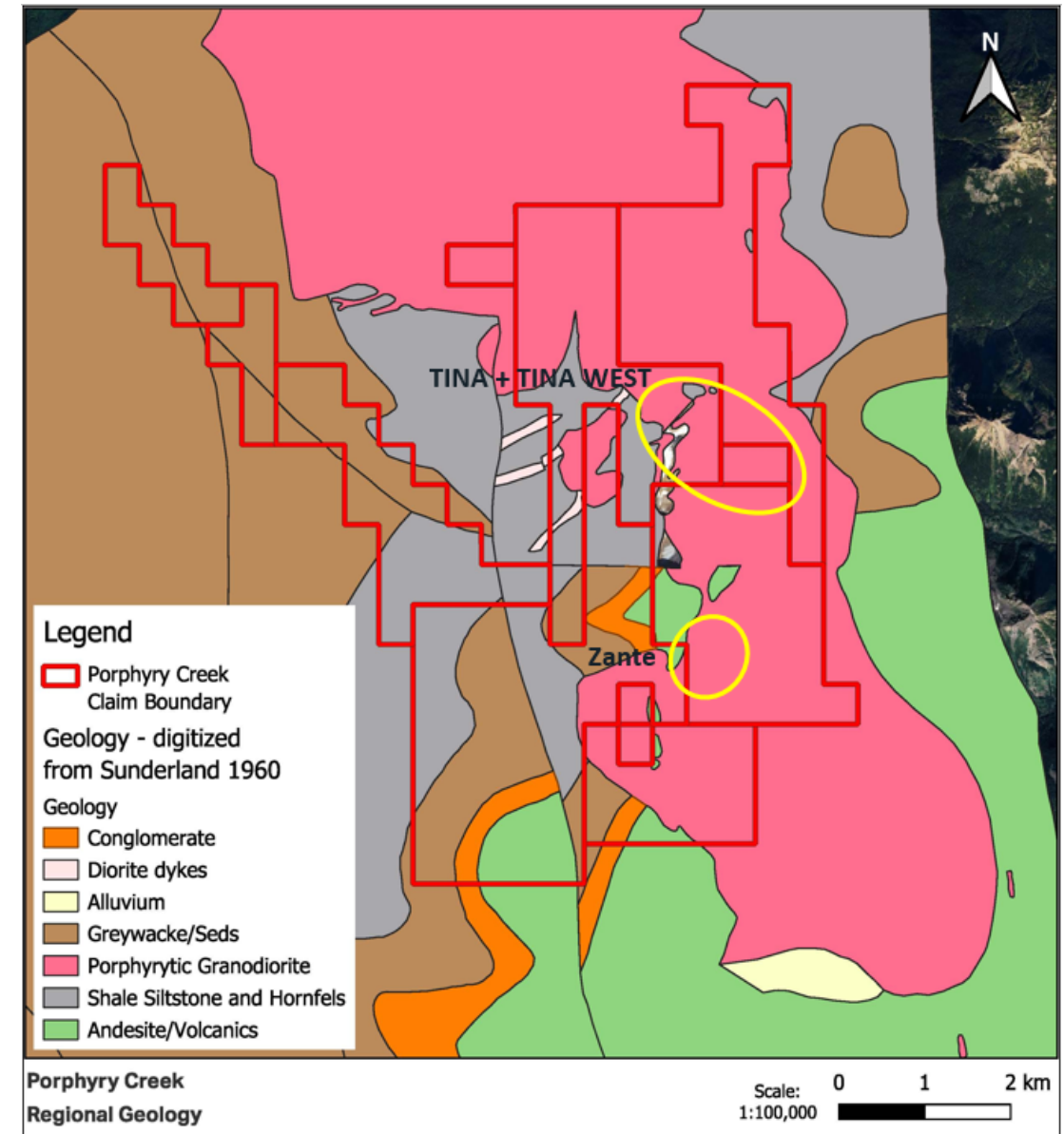
Location & Regional Overview

- North-Central Interior British Columbia
- Adjacent to established community of Hazelton, BC
 - Road Access
- Claim Package helicopter access
 - Drill roads in southern extent



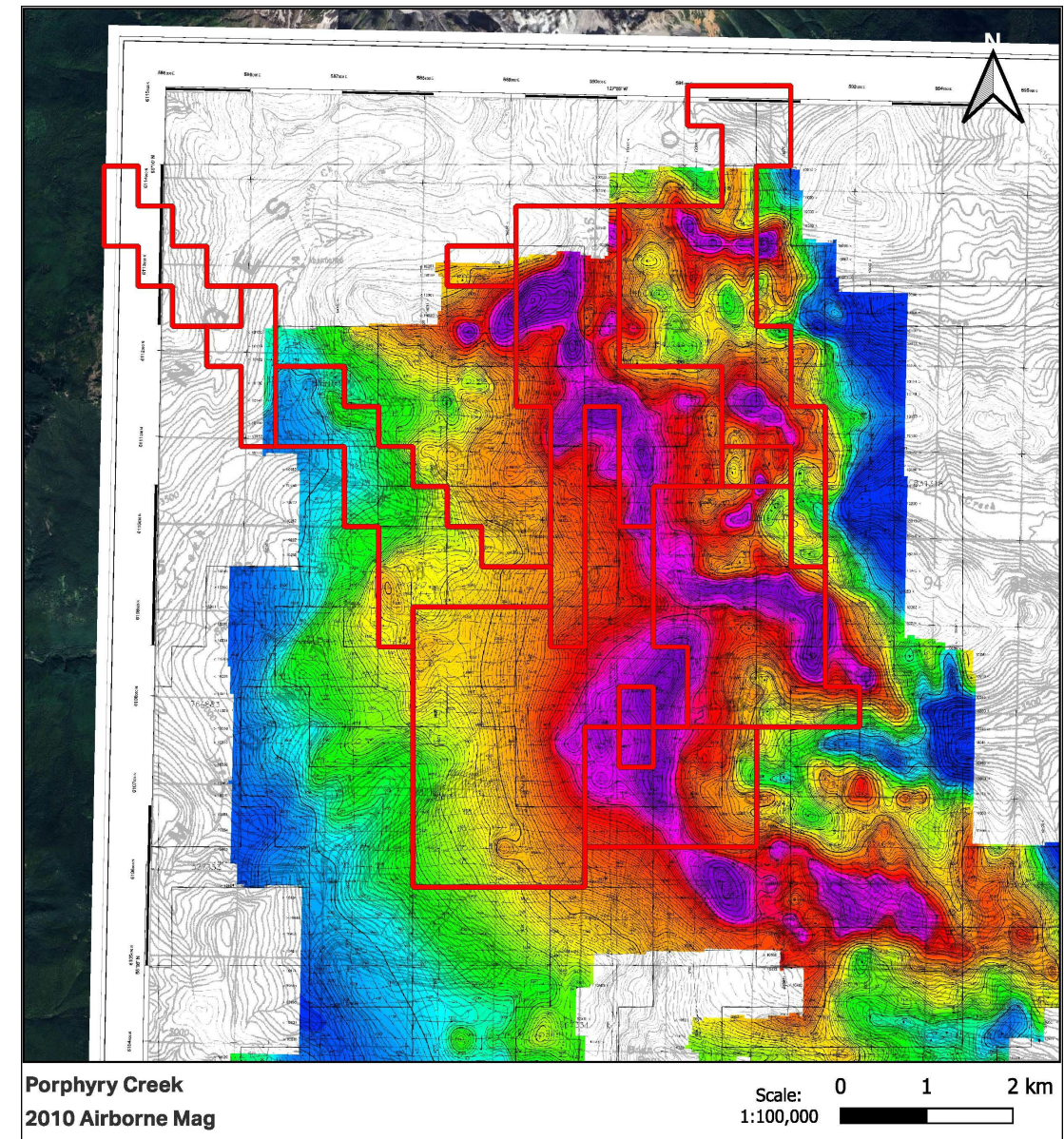
Regional Geology

- Mesozoic Bowser Lake group Shales/Siltstone/Hornfels
 - Upper-Jurassic to Lower Cretaceous
- Late-Stage porphyritic Granitoid Intrusions
 - Granodiorite to Quartz Monzonite
 - Base-Metal Mineralization showings adjacent/proximal to edge of intrusions
- Andesitic Volcanics mapped in southern extents



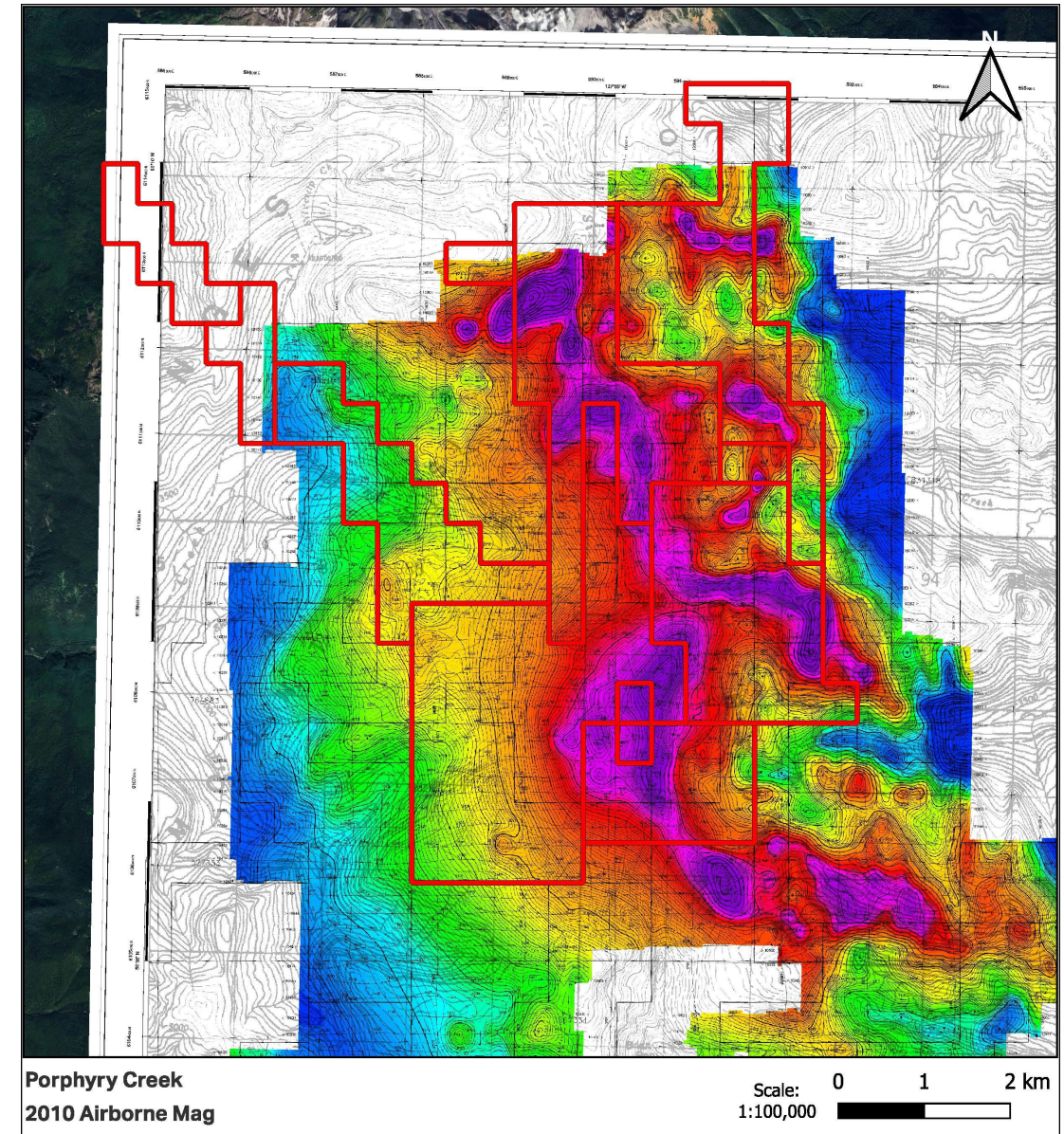
Regional Geophysics

- Airborne Surveys completed 2010-2011
 - Magnetics
 - Radiometrics
 - Uranium
 - Dose Rate
 - Potassium Eq
 - Thorium



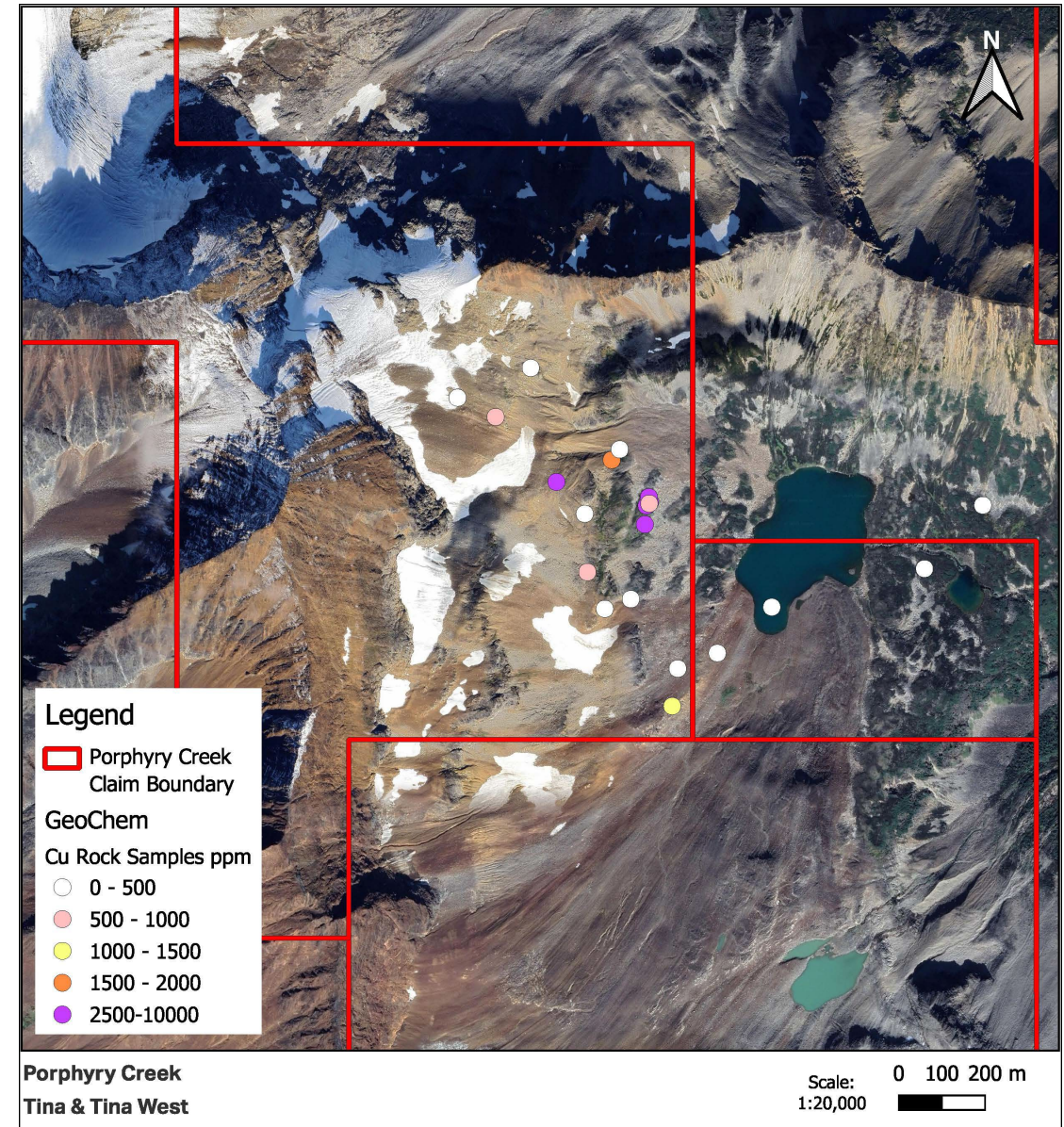
Property Magnetics

- Magnetic Highs associated with Plutonic Intrusions
- Base Metal Showings confirmed as proximal to intrusional contacts



TINA + TINA WEST

- Sub-parallel 10-30cm quartz veins well mineralised with chalcopyrite and molybdenite
- Indications of mineralisation between the veins
- Area previously only known for molybdenite mineralisation
- Additional sampling in 2025 expanded showings with assays pending
- Next steps
 - Detailed alteration mapping on slope north of Tina minifile following up on 2025 prospecting
 - Ground based IP and Mag
 - 2000-3000 m discovery focused drill campaign



TINA + TINA WEST 2025 photos

Sample 194385

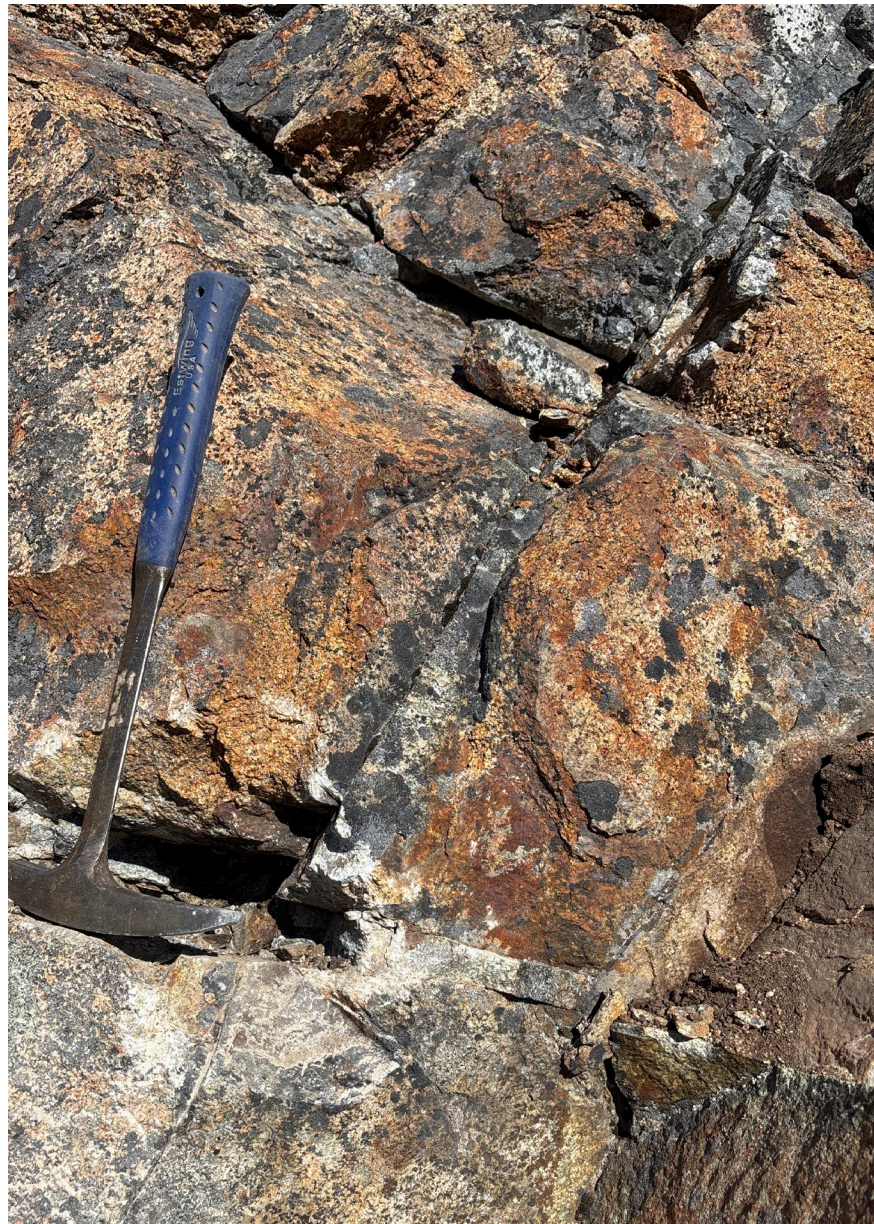
- Cm scale
chalcopyrite/molybdenite
vein in granodiorite
- Stockwork chalcopyrite
and molybdenite veining.
- Assays pending



TINA + TINA WEST 2025 photos

Sample 194386

- Note intense alteration
- Stockwork chalcopyrite and molybdenite veining
- Assays pending



Tina West 2022 sampling

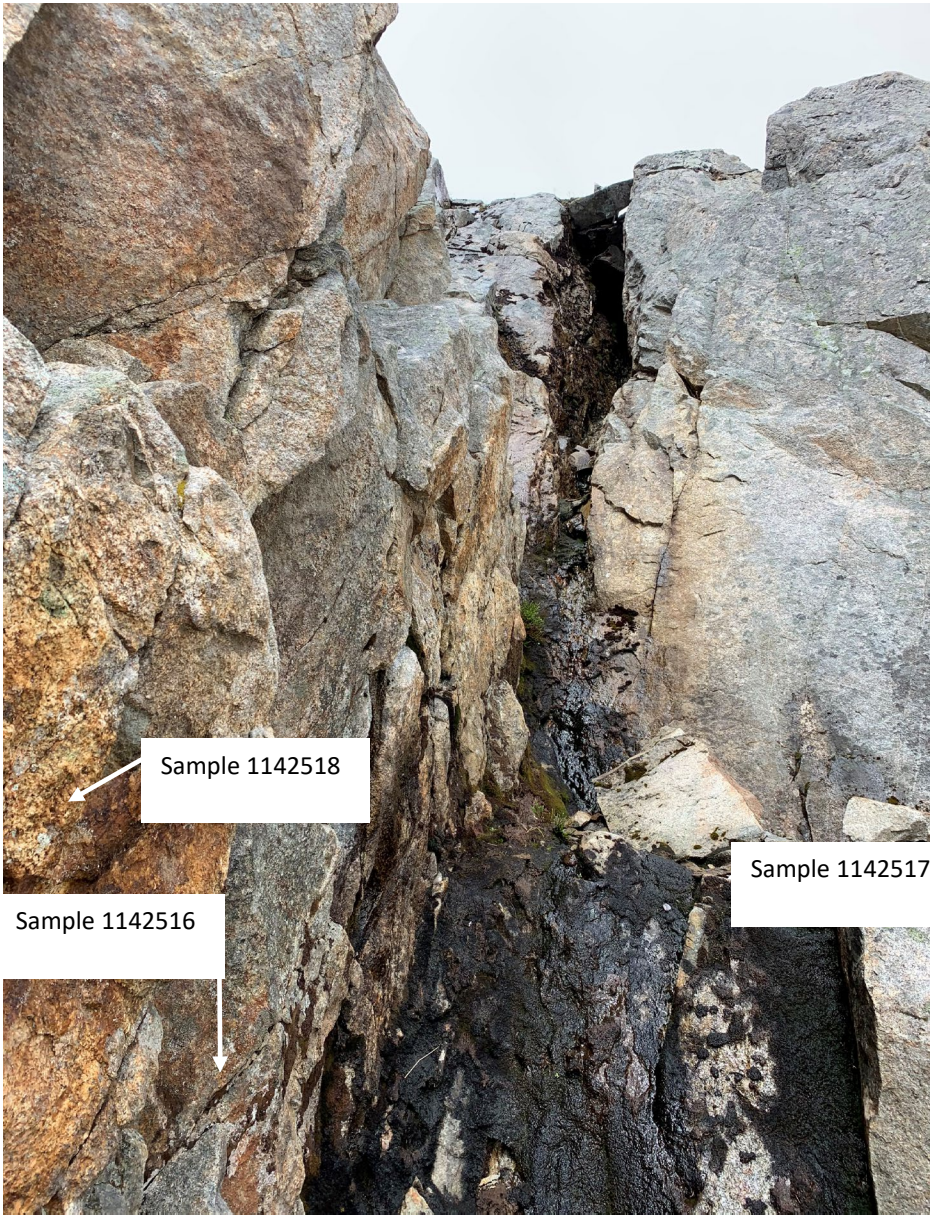
Sample	Cu	Mo
1142516	0.99%	0.18%
1142517	0.34%	120ppm
1142518	0.77%	NA

Granodiorite hosts a 20-30cm sheared quartz vein mineralized with coarse clotty chalcopyrite and molybdenite.

Vein strikes 310 degrees and dips steeply to the west.

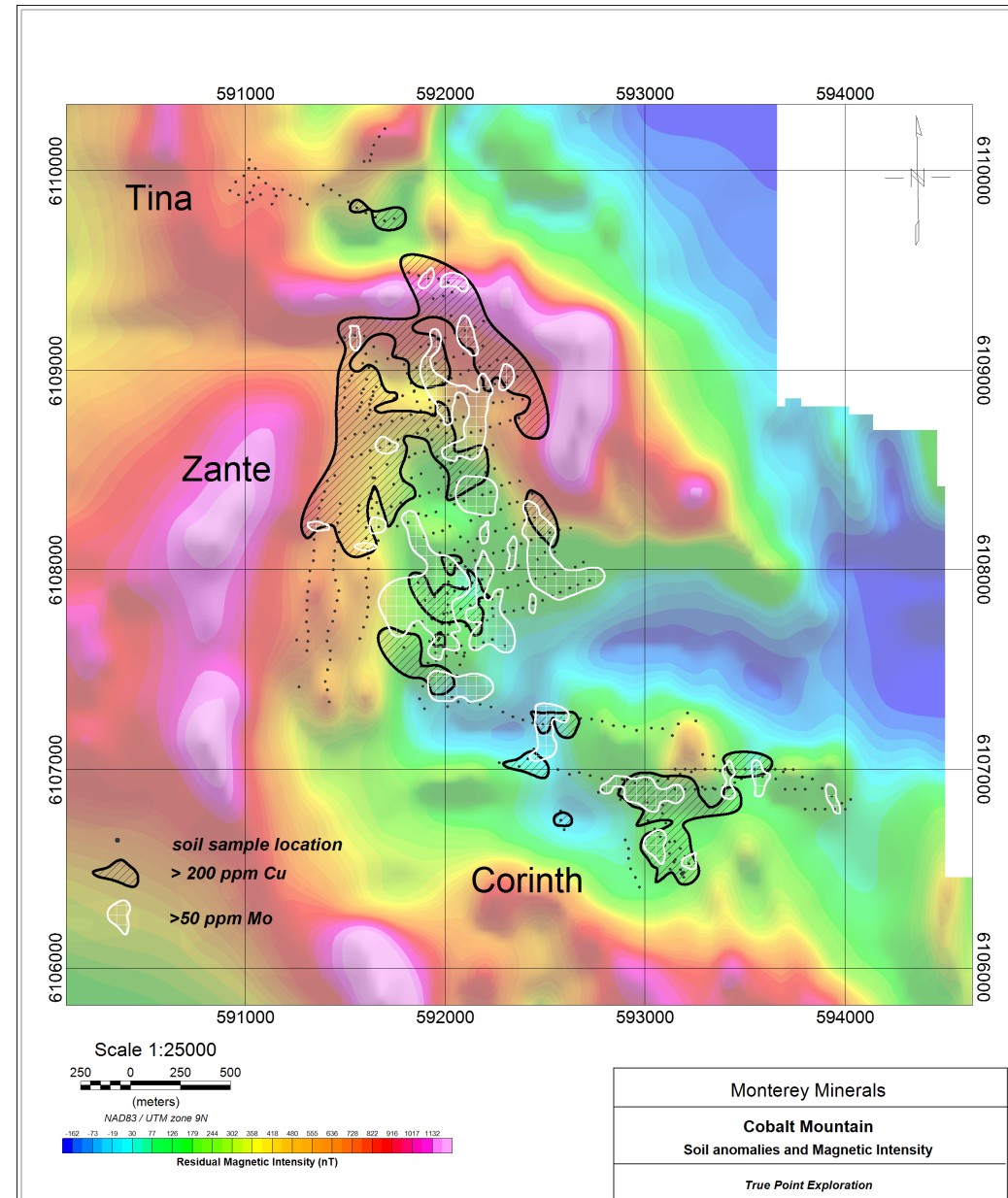
Two other similar occurrences roughly 50 meters apart were found located in the same area.

Disseminated CPY noted in the wall rock between the course veins.




Zante

- Co-incident copper and molly in soils anomaly
- Soil anomaly open to the North , East and West
- Semi circular magnetic feature surrounds the soil anomaly
- Next steps
 - Ground based Mag and IP to define drill targets
 - 2000-3000 meter discovery focused drill program



Historic Work

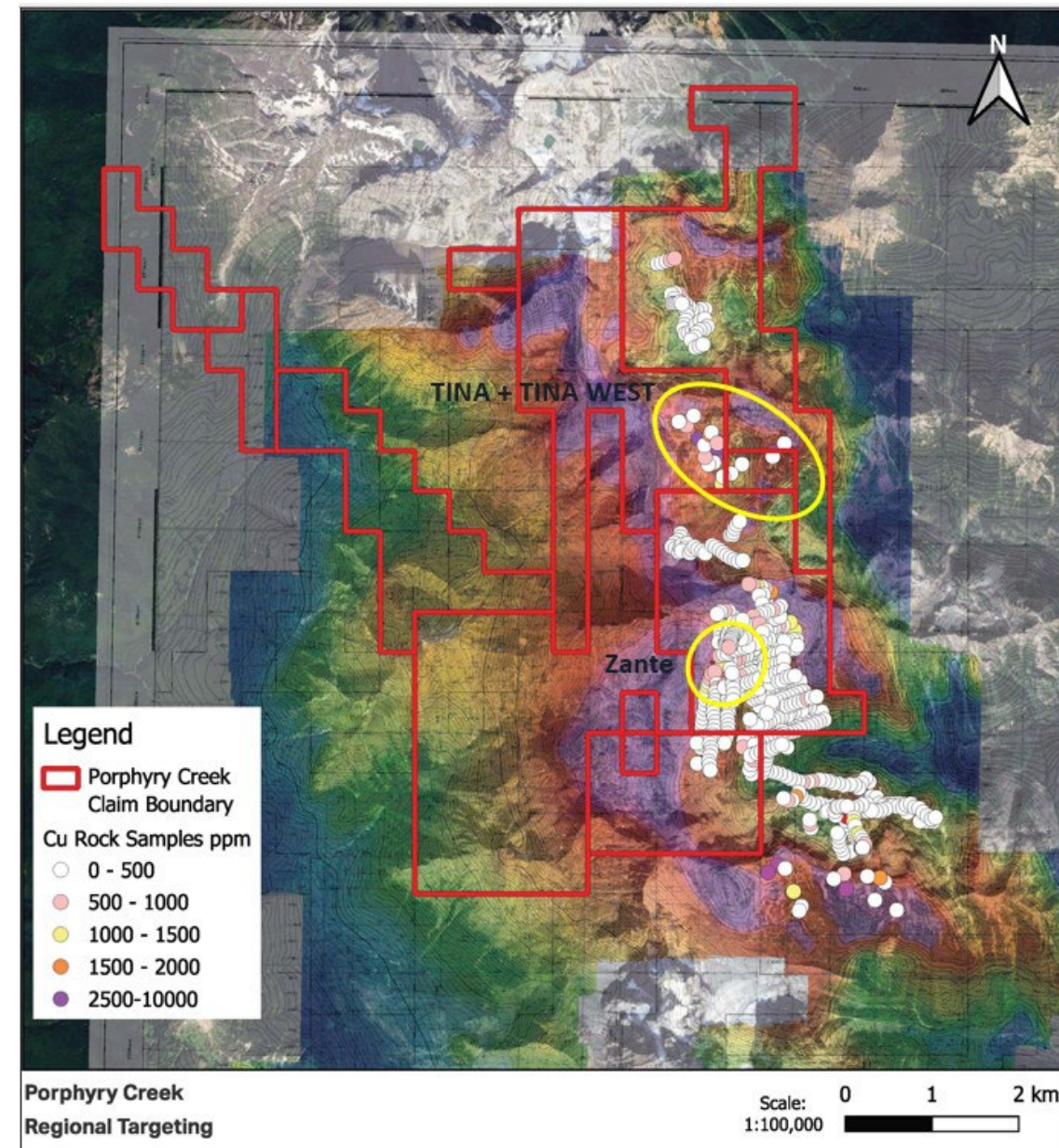
- Activity/Development peaked in early 1914-1919
- Secondary Spike post WW2
- Red Rose Production 1942-1954
 - 114,175 Ore Tonnes
- Red Rose Production
 - 52,719 Ore Tonnes
- Project mostly dormant after 1954
- 2008-2025 Mapping/Geochem sampling
- 2010-2011 Drilling
 - 9 holes total



Period	Major Exploration Activity
1910	Original Exploration of Cobalt Mountain
1915-1954	Substantial production from Roche Deboule and Red Rose mines
1960	Provincial BC Mapping
2008	Claim package staked by Duncastle Gold Corp
2010–2011	9 Diamond Drill Holes completed by Duncastle
2014-2019	Intermittent Soil/Rock Geochem sample campaigns NI-43-101 Filed on by Longford Exploration Services
2022	Additional Soil/Rock Geochem sample campaign
2025	Optioned by Cronin Exploration to multiple Vendors

Follow-up Targeting

- Base Metal mineralization known to be associated with proximal-edges of Magnetic Highs
- Hyperspectral Analysis would add to understanding of Structural Geology
- Untested areas highlighted in Yellow
- Western Extents remains open/untested
 - Rugged Terrain – Difficult Traverses
- Follow-Up IP Survey testing targets at depth
 - Drill Targeting preparation



Proposed Exploration Program

- Hyperspec Structural Analysis
- Additional Mapping/Sampling of Tina & Zante
- Surface IP survey
- Drilling

Summary

- 3,422Ha claim package
- Copper Porphyry
- Known Base Metal Mineralization on site
- Historic Production
- Defined Exploration Targets
 - Mapping/Sampling



Unit 309-2912 West Broadway Street,
Vancouver, BC V6K 0E9 Canada



+1 (250) 877-1394



khardy@cronincapital.ca